





Capicorda a compressione meccanica CU, DIN 46234, 50 - 70mm²

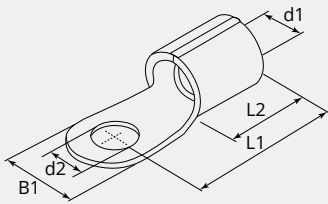
Tipo Q, per conduttori in rame

<p>Codice articolo: Q70-12</p> <p>Imballo: 50</p>	
<div>    </div>	

CARATTERISTICHE TECNICHE

Materiale:	Rame ETP (CW004A)
Superficie:	Stagnato elettroliticamente
Sezione cavo (mm ²):	50 - 70
Bullone (Ø):	12
Produttore:	Gruppo Cembre

DIMENSIONI



DIMENSIONI

L1 (mm):	38.0
L2 (mm):	18.0
B1 (mm):	22.0
d1 (Ø):	13.0
d2 (Ø):	13.0