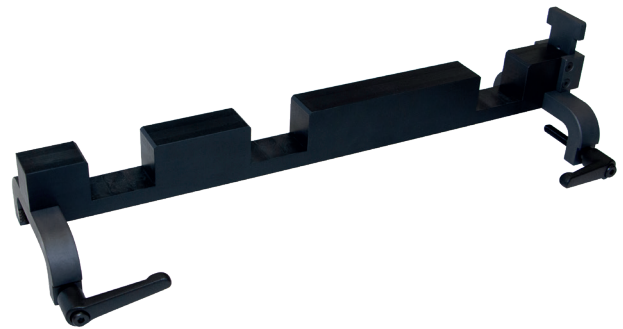


# Rail drilling jig for insulated joints and fishplate holes MRF-66-266-386

without profile jaws, for SBB1-6, UNI46, UIC60

Item number:	MRF-66-266-386
Product weight (kg):	1.7253 kg
Packing unit:	1



Thanks to replaceable profile jaws, only one distance gauge is required for all conventional rail profiles (UNI46 / SBB1, UIC54E / SBB4, UIC60 / SBB6). Changing the profile jaws takes place in just a few steps.

## TECHNICAL CHARACTERISTICS

Weight (kg):	1.7
--------------	-----

